

DATA SHEET



DIGMESA

FMIG 1/2" SK Arnite
Part number: 935-1500/XSK

General Description

The FM Flowmeter is a general-purpose precision device. It measures with constant precision and guarantees maximum accuracy in the measurement of fluid volumes. Its integrated electronic pulse emitter, plus the forces acting centrally upon its vane give an additional guarantee for a practically unlimited useful life. By means of its multi-jet metering principle, a very high degree

of accuracy is achieved and for this reason it is employed in many different industrial sectors.

Special features: High accuracy. Sturdy bearing. Impulses can be doubled (turbine with 4 magnets). **Used for large measurements of beer, due to its high working range. SK-verified SK 223.03**

Approvals / Standards

EN 50081-1:92, EN 50082-1:97,
EN 61000-3-2:00, EN 61000-3-3:95,
IEC 61000-6-3:96, IEC 61000-6-1:96,
IEC 61000-3-2:00, IEC 61000-3-3:94 + A1:01



Material:

| | |
|---------------|---|
| Housing: | PBT 35%GF (Arnite) |
| Parting disk: | Thermolast K T F 6 A A G |
| Bearing pin: | Inox 1.4305 |
| O-ring: | MVQ (Silikon) |
| Turbine: | PVDF 2 Magnets 4 Magnets on request |
| Magnets: | Keramik Sr Fe O (in contact with the medium) |
| Nuts: | Inox 1.4305 hexagon nuts |

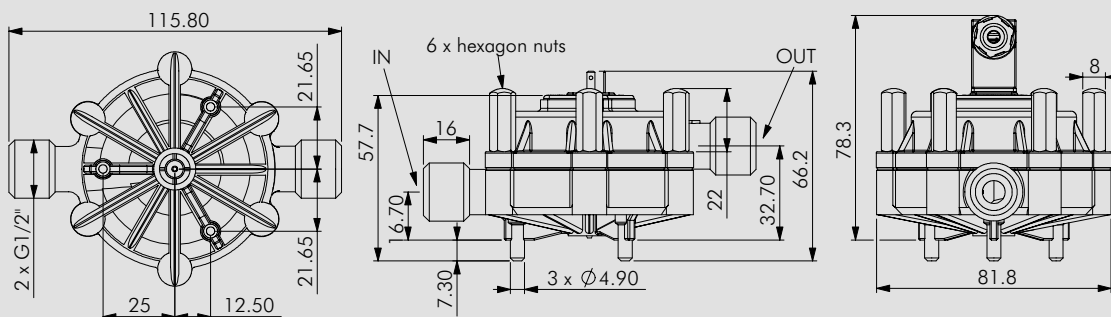
Technical data:

| | |
|---------------------|----------------------------------|
| Flow rate: | 0.24 - 17.00 l/min |
| Measuring accuracy: | +/- 2.0% |
| Repetition: | < +/- 0.25% |
| Temperature range: | -10°C to +65°C 14°F to 149°F |
| Pressure range: | 20 bar at 20°C 290 psi / 68°F |
| Mounting position: | Horizontal recommended |
| Nozzle size: | Ø 8.0 mm |

Electrical connection ratings:

| | |
|--------------------|------------------------|
| Power supply: | 4.5–24 VDC |
| Consumption: | 5 mA to max. 13 mA |
| Signal connection: | Open collector NPN |
| Signal voltage: | 0 V GND |
| Signal load: | max. 20 mA |
| Leakage current: | max. 10 µA |
| Connections: | 3-pin AMP 2.8 x 0.5 mm |
| Signal: | Square-wave output |
| Duty Cycle: | 50% / ± 5% |

Dimensions in mm:



Included in the delivery:

3-pin solenoid socket
Item number: 941-0002/3



We reserve the right to make modifications in the interests of technical progress.

RESISTANCE

Special regulations which must be complied with by the flowmeter manufacturer apply to each country, e.g. CE, NSF, FDA and SK. The various media flowing through the flowmeter differ from application to application. You are advised to enquire with the medium manufacturer as to whether the entire installation and the flowmeter are resistant to the medium itself (see Material)!

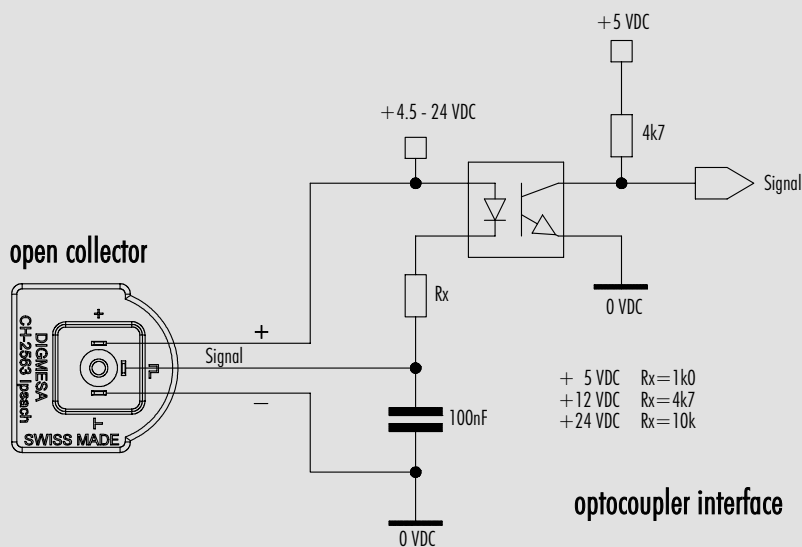
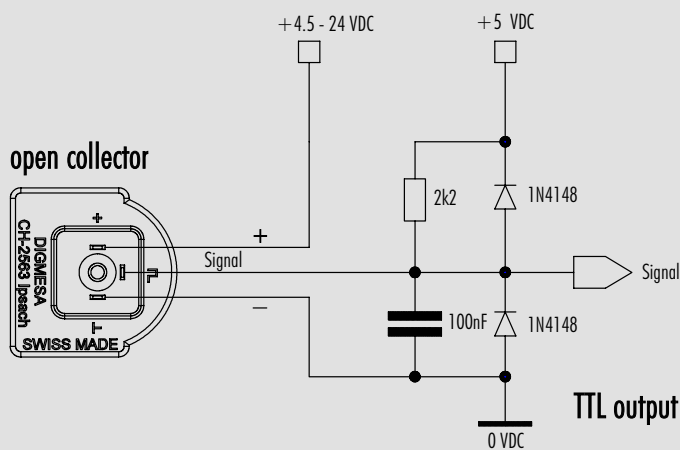
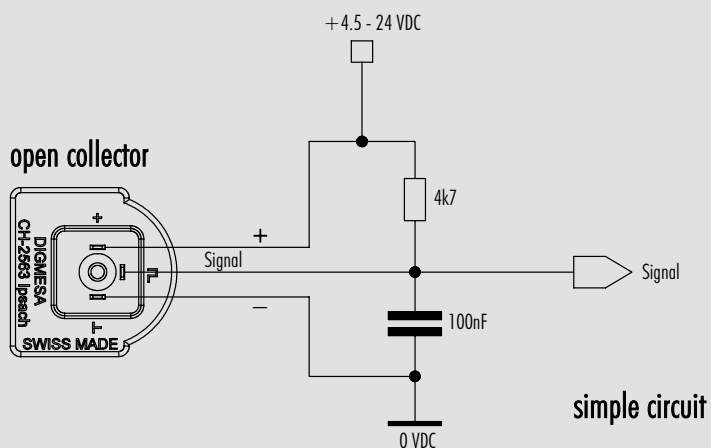
ELECTRONIC

DIGMESA electronic circuitry is always designed for operation with DIGMESA flowmeters. Please note the following if connecting to other electronic circuitry:

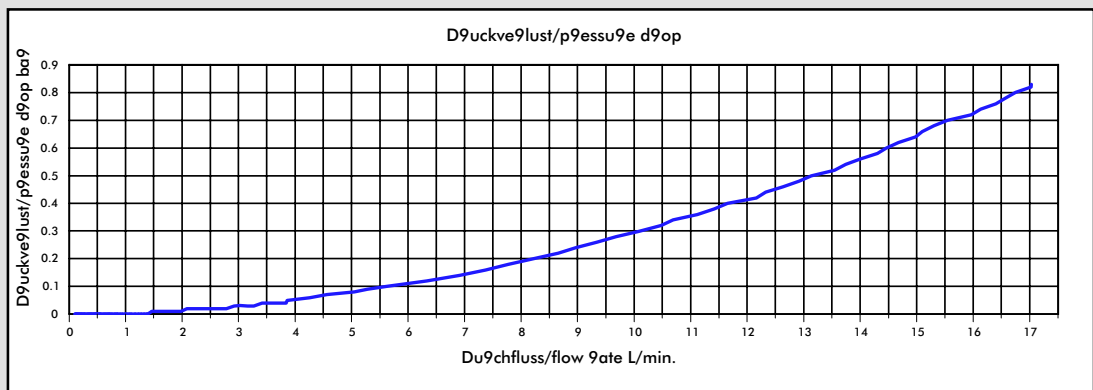
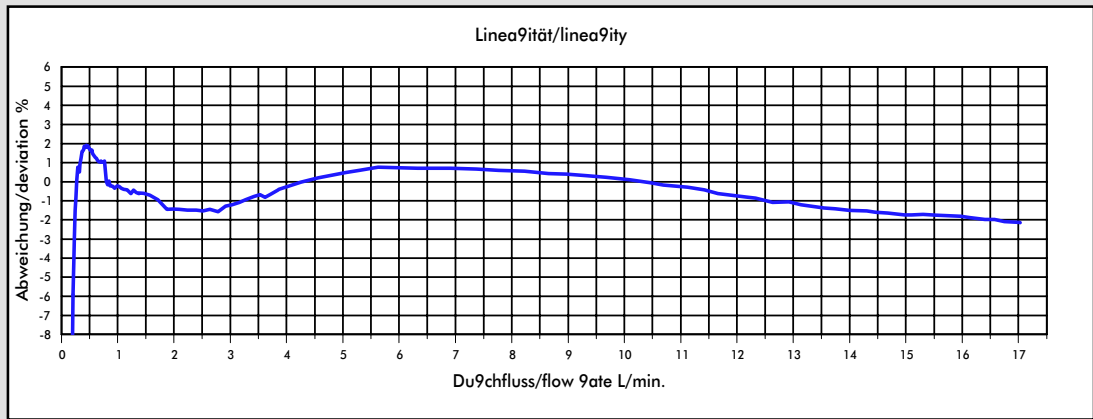
- The flowmeter does not supply an output voltage but switches the signal terminal to 0 V ground (actuated) or leaves it open (non-actuated)
- There must be a pull-up resistor between power supply + and signal depending on electronic circuitry!

Version 01 FMIG 1/2" SK Arnite 935-1500/XSK GB Page 2-6

Interface Connection: Examples Open Collector



Measurement Curve FM Ø8.00 mm 2 Magnets



Medium: Water / max. Pressure: 3.3 bar

| Nozzle size | Pulses/litre | g/pulse | min. flow rate in litres/min at Linear start | max. flow rate in litres/min | Pressure loss |
|-------------|--------------|---------|--|------------------------------|---------------|
| Ø 8.00 mm | 147 | 6.7832 | 0.2461 | 17.00 | 0.83 |

The min. and max. flow rate and the pressure loss may vary depending on viscosity.

The values specified must be considered as approximate values.

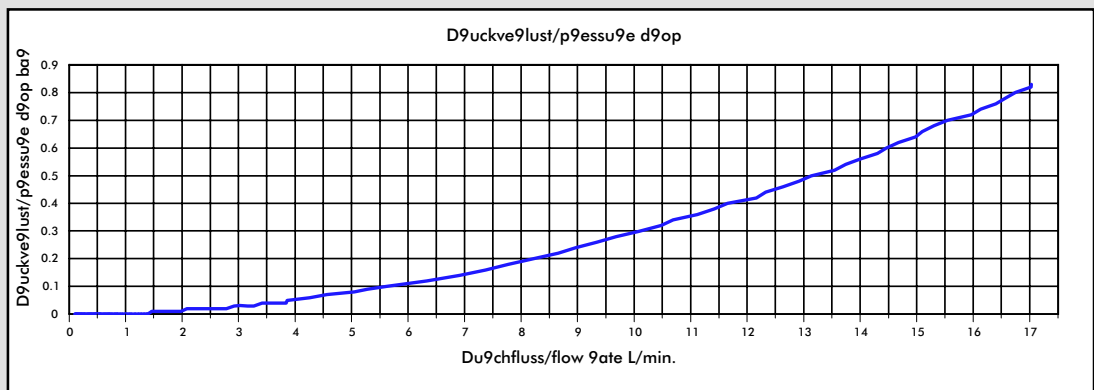
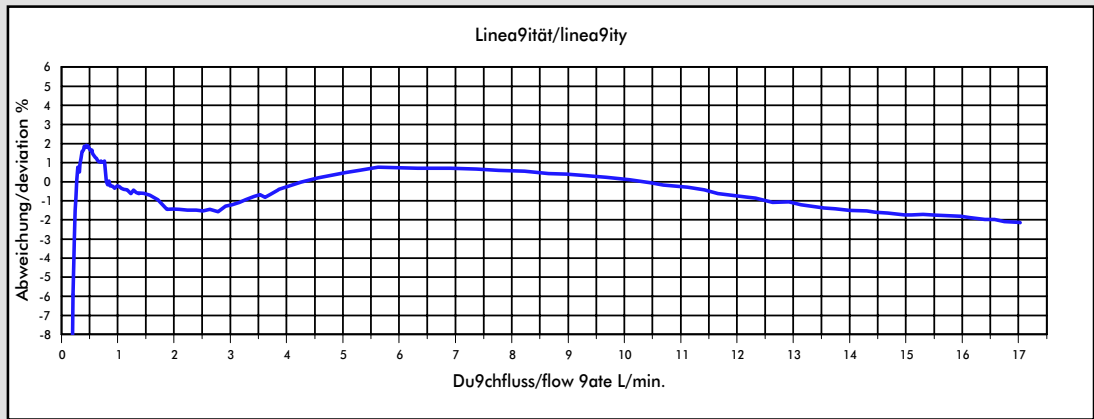
The number of pulses per litre may differ depending on medium and installation.

We recommend to calibrate the number of pulses per litre in line with the complete installation.

MEASUREMENT TIPS

- Ensure that there is no fast-pulsatory movement of the media
- Ensure that there are no reverse pressure surges
- Ensure that there is no air in the system
- Note the mounting position of the flowmeter
- Min/max flow should be in the linear range of the selected flowmeter
- Clean the system at appropriate intervals
- Avoid electrical current peaks
- Incorrect cabling of power supply +, signal and ground will destroy the flowmeter
- Do not mechanically load electrical contacts
- Avoid moisture on the electrical contacts
- Avoid stray pick-up via the cable (Do not lay cables in parallel with high current loads)

Measurement Curve FM Ø8.00 mm 4 Magnets



Medium: Water / max. Pressure: 3.3 bar

| Nozzle size | Pulses/litre | g/pulse | min. flow rate in litres/min at Linear start | max. flow rate in litres/min | Pressure loss |
|-------------|--------------|---------|--|------------------------------|---------------|
| Ø 8.00 mm | 294 | 3.3916 | 0.2461 | 17.00 | 0.83 |

The min. and max. flow rate and the pressure loss may vary depending on viscosity.

The values specified must be considered as approximate values.

The number of pulses per litre may differ depending on medium and installation.

We recommend to calibrate the number of pulses per litre in line with the complete installation.

MEASUREMENT TIPS

- Ensure that there is no fast-pulsatory movement of the media
- Ensure that there are no reverse pressure surges
- Ensure that there is no air in the system
- Note the mounting position of the flowmeter
- Min/max flow should be in the linear range of the selected flowmeter
- Clean the system at appropriate intervals
- Avoid electrical current peaks
- Incorrect cabling of power supply +, signal and ground will destroy the flowmeter
- Do not mechanically load electrical contacts
- Avoid moisture on the electrical contacts
- Avoid stray pick-up via the cable (Do not lay cables in parallel with high current loads)

